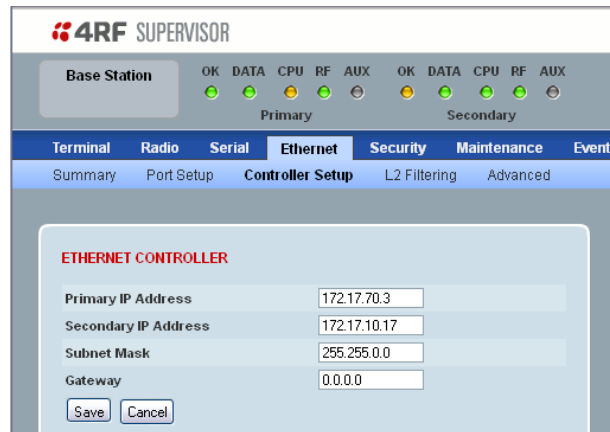


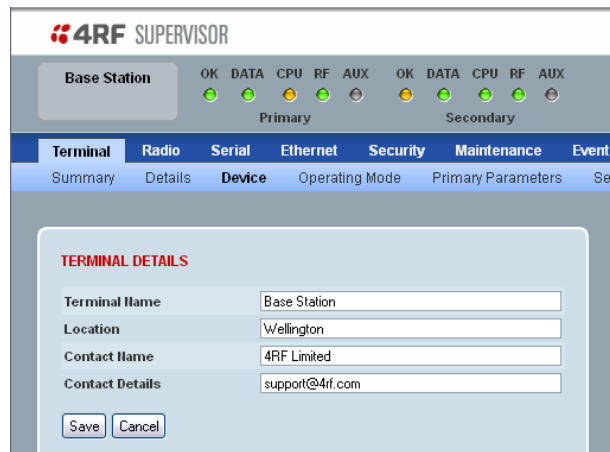
Each radio in the FAN (Field Area Network) and both radios in the Protected Station must be setup with unique IP addresses on the same subnet.



(2) Setup the Primary IP address, Secondary IP address, Subnet mask and Gateway to network compatible IP addresses.



(3) Configure the Terminal / Radio parameters and settings e.g. Terminal > Device settings



All parameters will be automatically synchronized on the Secondary radio.

Please refer to the Aprisa SR User Manual on the Information and setup CD for more information.

(4) Reboot both Primary and Secondary radios.

(5) Ensure that the Hardware Manual Lock switch is set to AUTO.

The Aprisa SR Protected Station is ready to operate.



Quick Start Guide

Aprisa SR Protected Station

Contents

Follow these steps to setup your Aprisa SR Protected Station:

1. Check the box contents
2. Install the Aprisa SR Protected Station
3. Apply power to the Aprisa SR Protected Station
4. Set up the Aprisa SR Protected Station

1. Check the box contents *

The Aprisa SR Protected Station is shipped to you in a box containing the following:

(1) Aprisa SR Protection Switch fitted with:

- Two Aprisa SR Radios pre cabled to the switch
- Two rack mounting brackets
- Two 2 pin female power connectors
- One 4 pin female remote control connector



(2) Information and setup CD containing the following:

- Aprisa SR System Software
- Aprisa SR Product Description
- Aprisa SR User Manual
- Aprisa SR Software Release Notes
- Adobe® Reader® (for viewing the PDF files on the CD)
- USB Serial Driver
- Microsoft® Internet Explorer web browser
- Mozilla Firefox web browser



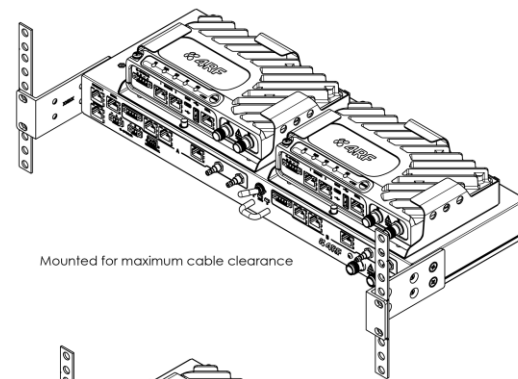
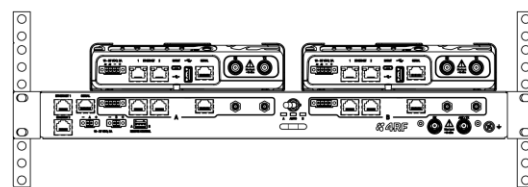
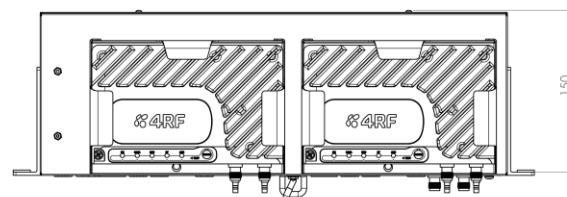
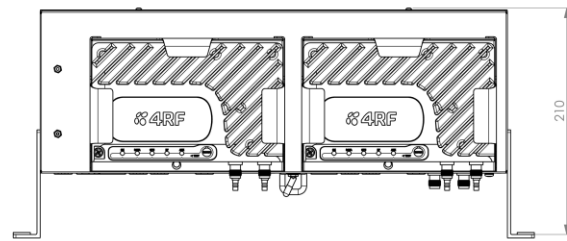
(3) USB Cable USB A to USB micro B, 1m

(used for Command Line Interface management see Aprisa SR User Manual)

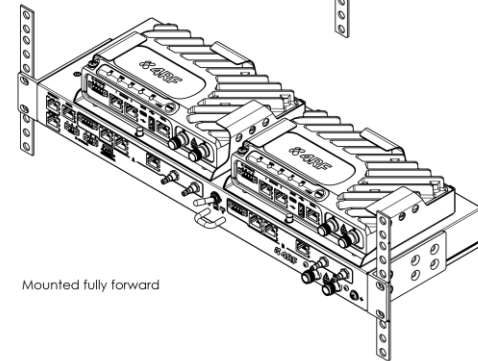


2. Install the Aprisa SR Protected Station

The Aprisa SR Protected Station is designed to mount in a standard 19" rack.



Mounted for maximum cable clearance



Mounted fully forward

3. Apply power to the Aprisa SR Protected Station

(1) Connect the antenna to the Protection Switch antenna port (TNC female connector). If the antenna is not available, terminate the antenna port with a TNC male 50 ohm terminator (5 Watts min). If dual antenna port option radios are fitted, then both antennas / terminators must be connected.

(2) The Aprisa SR Protected Station is operated from a DC source of voltage between +10 VDC and +30 VDC (negative earth) and consumes up to 35 Watts. Two power connectors (Phoenix Contact 2 pin female) are supplied fitted to the Protection Switch. Wire your power source to the two power connectors (- / +) and plug the connectors into the Protection Switch. The connector screws can be fastened to secure the connectors.



(3) Turn your power source on.

All the LEDs on both radios will flash orange for one second and then change to:

- Active radio - the OK and RF LEDs will light orange, the DATA and CPU LEDs will light green, and the AUX LED will be off.
- Standby radio - the OK, RF and CPU LEDs will light orange, the DATA LED will light green, and the AUX LED will be off.

4. Set up the Aprisa SR Protected Station

Ensure that the Hardware Manual Lock switch is set to radio A (this is a factory default setting). This prevents random switching when changing the radio settings.

Setup both Protected Station radios individually with the following procedure:

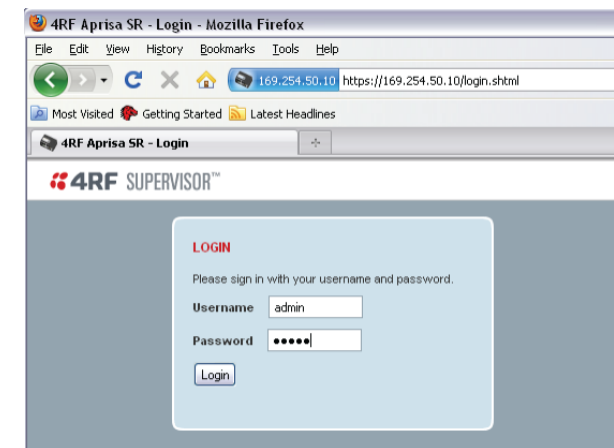
(1) Login to radio A.

Aprisa SR radio A (left radio) in the Protected Station has a factory default IP address of 169.254.50.10 and Aprisa SR radio B (right radio) in the Protected Station has a factory default IP address of 169.254.50.20, both with a subnet mask of 255.255.0.0.

- Set up your PC for a compatible IP address e.g. 169.254.50.1 with a subnet mask of 255.255.0.0.
- Connect your PC network port to one of the Aprisa SR Protection Switch Ethernet ports (1 or 2).
- Open a browser and enter <http://169.254.50.10>.

Note: The Aprisa SR has a self signed security certificate which may cause the browser to prompt a certificate warning. It is safe to ignore the warning and continue. The valid certificate is 'Issued By: 4RF-APRISA' which can be viewed in the browser.

- Login to radio A with the default login 'admin' and password 'admin'.



* When the spare Aprisa SR Protection Switch is supplied (APSP-XPSW), the item includes the Aprisa SR Protection Switch, mounting brackets, 2x power connectors, 1x control connector and two sets of Protection Switch cables (APSP-XPSC-ST6).

The Aprisa SR radios fitted to the Aprisa SR Protection Switch must be running software version 1.4.3 or later.